

PARTS CATALOG

imageCLASS MF3110/

imageCLASS MF3112/

LaserBase MF3110/

LASER SHOT MF3110

Canon

Aug 27 2004

PREFACE

This Parts Catalog contains listings of parts used

Diagrams are provided with the listings to aid the service technician in identifying clearly, the item to be ordered.

Whenever ordering parts, consult this Parts Catalog for all of the information pertaining to each item. Be sure to include, in the Parts Request, the full item description, the item part number, and the quantity.

COPYRIGHT (C) 1999 CANON INC.

Use of this manual should be strictly supervised to avoid disclosure of confidential information.

Contents

Parts List Index

imageCLASS MF3110/imageCLASS MF3112/LaserBase MF3110/ LASER SHOT MF3110	1-1
--	-----

imageCLASS MF3110/imageCLASS MF3112/LaserBase MF3110/ LASER SHOT MF3110

A	ASSEMBLY LOCATION DIAGRAM	2-1
001	PACKAGE COMPONENTS	2-2
100	EXTERNAL COVERS, PANELS ,ETC.	2-3
101	INTERNAL COMPONENTS 1	2-5
102	INTERNAL COMPONENTS 2	2-7
103	INTERNAL COMPONENTS 3	2-9
104	INTERNAL COMPONENTS 4	2-11
105	INTERNAL COMPONENTS 5	2-13
110	POWER SUPPLY ASS'Y	2-15
210	SCANNER ASS'Y	2-17
300	CASSETTE	2-19
950	SCNT BOARD ASSEMBLY	2-21

NUMERICAL INDEX

imageCLASS MF3110/imageCLASS MF3112/LaserBase MF3110/LASER SHOT MF3110

PARTS NUMBER	FIGURE & KEY NO.	PARTS NUMBER	FIGURE & KEY NO.	PARTS NUMBER	FIGURE & KEY NO.
FA7-6216-000	001 - 2	FL2-1044-000	105 - 13	HG1-5295-000	110 - 4
FA7-6219-000	001 - 2	FL2-1046-000	103 - 5	HH2-3274-000	950 - 4
FA7-6222-000	001 - 2	FL2-1047-000	300 - 3	NPN	001 -
FA7-6225-000	001 - 2	FL2-1050-000	102 - 6	NPN	100 -
FA7-6662-000	001 - 2	FM2-1069-000	104 - 2	NPN	101 -
FC5-4775-000	102 - 1	FM2-1081-000	102 - 2	NPN	102 -
FC5-4778-000	102 - 8	FM2-1098-000	105 - 11	NPN	103 -
FC5-4799-000	103 - 2	FM2-1099-000	105 - 11	NPN	104 -
FC5-4800-000	103 - 1	FM2-2880-000	100 - 6	NPN	105 -
FC5-4807-000	103 - 7	FM2-2881-000	100 - 4	NPN	110 -
FC5-4808-000	101 - 1	FM2-2882-000	100 - 3	NPN	300 -
FC5-4814-000	101 - 2	FM2-2883-000	300 - 1	NPN	950 -
FC5-4827-000	105 - 1	FM2-2884-000	210 - 2	RC1-1776-000	103 - 6
FC5-4828-000	105 - 2	FM2-2885-000	210 - 1	XA9-1386-000	100 - 7
FC5-4829-000	105 - 3	FM2-2887-000	210 - 1	XA9-1386-000	101 - 5
FC5-4830-000	105 - 4	FM2-2888-000	300 - 7	XA9-1386-000	102 - 4
FC5-4832-000	105 - 6	FM2-2893-000	210 - 1	XA9-1386-000	104 - 12
FC5-4833-000	102 - 3	FM2-2894-000	210 - 2	XA9-1386-000	105 - 18
FC5-4834-000	105 - 7	FM5-5262-000	110 - 2	XA9-1386-000	110 - 3
FC5-4850-000	102 - 10	FM5-5263-000	103 - 3	XA9-1502-000	102 - 7
FC5-4860-000	105 - 17	FM5-5264-000	105 - 10	XA9-1502-000	105 - 12
FC5-4861-000	105 - 8	FM5-5273-000	110 - 4	XB1-2300-607	950 - 501
FC5-4862-000	105 - 9	FM5-5292-000	110 - 4	XB2-7300-607	103 - 502
FC5-4871-000	105 - 5	FM5-5293-000	110 - 4	XB2-7300-607	104 - 502
FC5-4878-000	104 - 16	FM5-5294-000	110 - 4	XB4-7300-807	210 - 501
FC5-4908-000	300 - 9	FM5-5296-000	110 - 4	XB4-7300-807	300 - 501
FC5-4911-000	300 - 5	FM5-5317-000	101 - 3	XB4-7400-807	100 - 501
FC5-4913-000	300 - 6	FM5-5318-000	101 - 3	XB4-7400-807	101 - 501
FC5-4921-000	103 - 9	FU5-0698-000	105 - 16	XB4-7400-807	102 - 501
FC5-4928-000	300 - 7	FU5-0699-000	102 - 9	XB4-7400-807	103 - 501
FC5-4933-000	300 - 7	FU5-0700-000	104 - 6	XB4-7400-807	104 - 501
FC6-2607-000	210 - 3	FU5-0701-000	104 - 7	XB4-7400-807	105 - 501
FC6-2608-000	210 - 4	FU5-0702-000	104 - 8		
FC6-2609-000	210 - 10	FU5-0703-000	104 - 9		
FC6-2610-000	100 - 8	FU5-0704-000	104 - 10		
FC6-2615-000	100 - 5	FU5-0705-000	104 - 13		
FC6-2616-000	300 - 2	FU5-0707-000	104 - 3		
FC6-2637-000	100 - 1	FU5-0709-000	104 - 4		
FC6-2638-000	100 - 2	FU5-0710-000	104 - 14		
FC6-2645-000	300 - 8	FU5-0713-000	105 - 15		
FG3-3830-000	950 - 1	FU5-0714-000	104 - 11		
FG3-3831-000	950 - 1	FU5-0716-000	103 - 8		
FG3-3835-000	950 - 2	FU5-2425-000	105 - 14		
FH2-7157-000	101 - 4	FU5-2429-000	104 - 15		
FH2-7189-000	950 - 3	FU5-2434-000	300 - 4		
FH3-2688-000	110 - 1	FY3-0293-000	210 - 7		
FH3-2689-000	110 - 1	FY5-0188-000	210 - 8		
FH5-1081-000	104 - 5	FY6-0383-000	210 -		
FH5-3676-000	001 - 1	FY6-0384-000	210 - 5		
FH5-3677-000	001 - 1	FY6-0385-000	210 - 6		
FH5-3678-000	001 - 1	FY6-0386-000	210 - 9		
FH5-3702-000	001 - 1	HC1-1613-000	100 - 9		
FH5-3703-000	001 - 1	HC1-1624-000	100 - 10		
FH5-3704-000	001 - 1	HC1-1947-000	100 - 11		
FH6-5093-000	104 - 1	HC1-2008-000	300 - 8		
FL2-1042-000	103 - 4	HC1-2009-000	300 - 8		
FL2-1043-000	102 - 5	HG1-4520-000	110 - 5		

imageCLASS MF3110/

imageCLASS MF3112/

LaserBase MF3110/

LASER SHOT MF3110

120V, LTN	F14-6631-000LZN02001-
120V, US	F14-6631-000UZN02001-
120V, CA	F14-6631-000YZN02001-
230V, CN	F14-6642-000CZN02001-
230V, CN	F14-6643-000TZN02001-
230V, GB	F14-6691-000BZN02001-
230V, EUR	F14-6691-000EZN02001-
230V, AU	F14-6691-000RZN02001-
230V, EUR	F14-6691-000VZN02001-

Contents

A	ASSEMBLY LOCATION DIAGRAM	2-1
001	PACKAGE COMPONENTS	2-2
100	EXTERNAL COVERS, PANELS ,ETC.	2-3
101	INTERNAL COMPONENTS 1	2-5
102	INTERNAL COMPONENTS 2	2-7
103	INTERNAL COMPONENTS 3	2-9
104	INTERNAL COMPONENTS 4	2-11
105	INTERNAL COMPONENTS 5	2-13
110	POWER SUPPLY ASS'Y	2-15
210	SCANNER ASS'Y	2-17
300	CASSETTE	2-19
950	SCNT BOARD ASSEMBLY	2-21

FIGURE A
ASSEMBLY LOCATION DIAGRAM

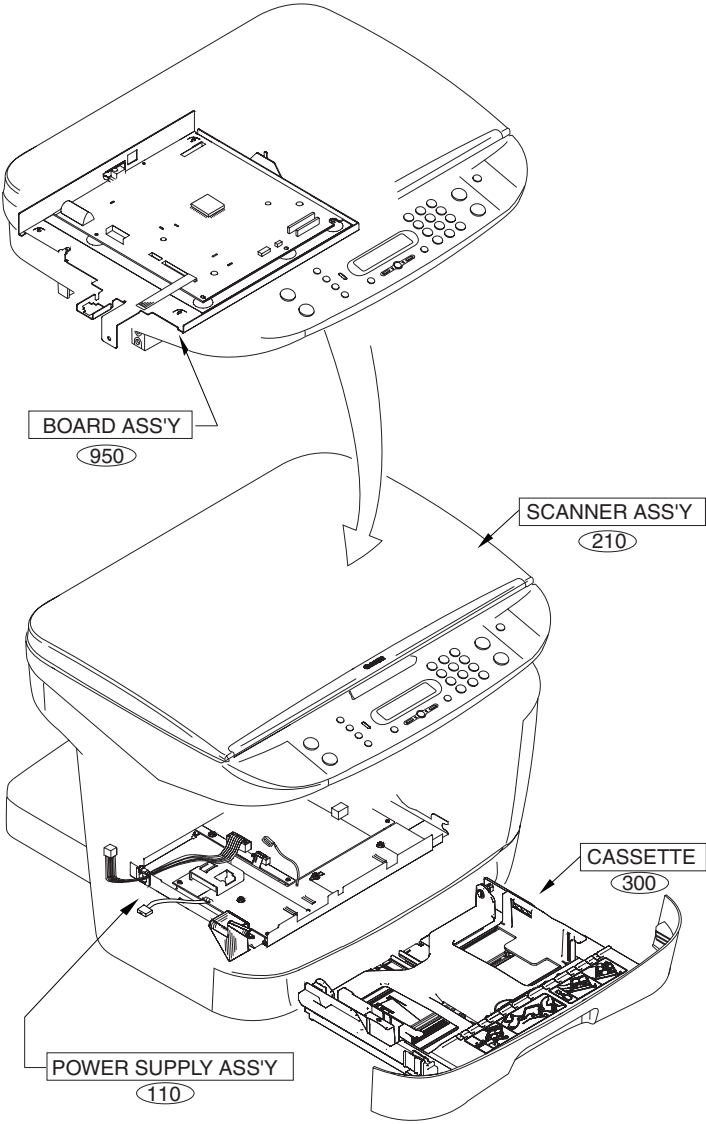


FIGURE 001 PACKAGE COMPONENTS

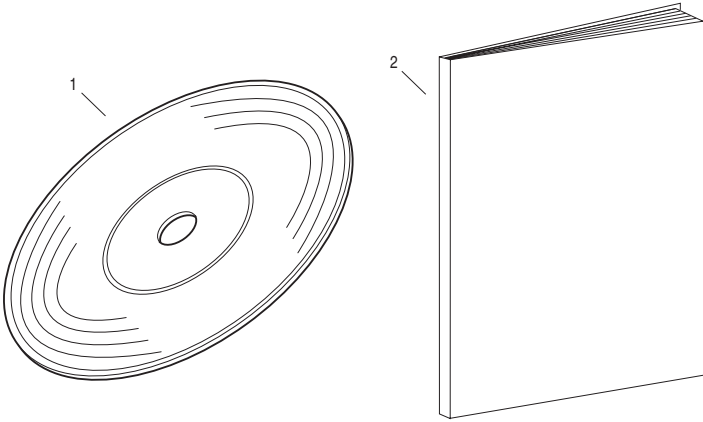


FIGURE & KEY NO.	PARTS NUMBER	RANK	QTY	DESCRIPTION	SERIAL NUMBER/REMARKS	SVC
Fig.001	NPN		RF	PACKAGE COMPONENTS		
1	FH5-3702-000		1	CD-ROM, USER SOFTWARE	AZN&CZN	
1	FH5-3677-000		1	CD-ROM, USER SOFTWARE	EZN&BZN	
1	FH5-3703-000		1	CD-ROM, USER SOFTWARE	LZN	
1	FH5-3704-000		1	CD-ROM, USER SOFTWARE	RZN&TZN&DZN	
1	FH5-3676-000		1	CD-ROM, USER SOFTWARE	UZN&YZN	
1	FH5-3678-000		1	CD-ROM, USER SOFTWARE	VZN	
2	FA7-6662-000		1	BASIC GUIDE(ENGLISH)	LZN	
2	FA7-6222-000		1	BASIC GUIDE(PORTUGUESE)	LZN	
2	FA7-6225-000		1	BASIC GUIDE(SPANISH)	LZN	
2	FA7-6216-000		1	BASIC GUIDE(ENGLISH)	UZN&YZN	
2	FA7-6219-000		1	BASIC GUIDE(FRENCH)	YZN	

FIGURE 100
EXTERNAL COVERS, PANELS ,ETC.

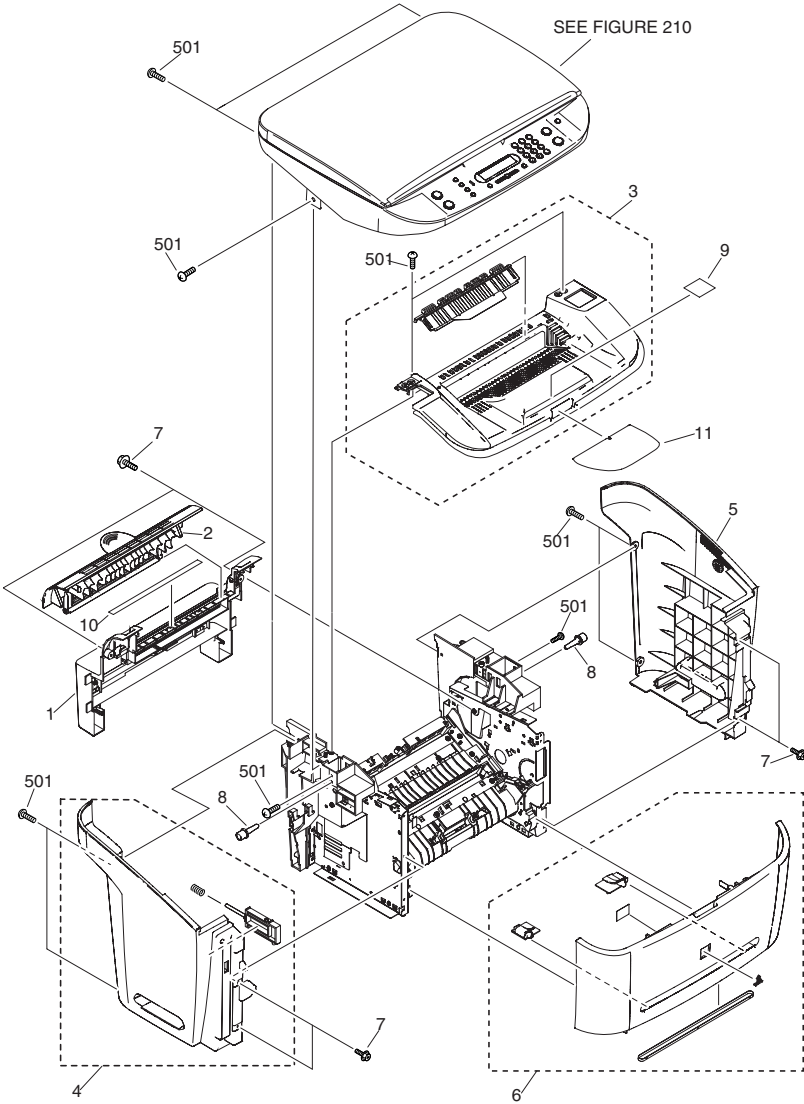


FIGURE & KEY NO.	PARTS NUMBER	RANK	Q'TY	DESCRIPTION	SERIAL NUMBER/REMARKS	SVC
Fig.100	NPN		RF	EXTERNAL COVERS, PANELS, ETC		
1	FC6-2637-000		1	COVER, REAR		
2	FC6-2638-000		1	COVER, FACE-UP		
3	FM2-2882-000		1	TOP COVER UNIT		
4	FM2-2881-000		1	LEFT COVER UNIT		
5	FC6-2615-000		1	COVER, RIGHT		
6	FM2-2880-000		1	FRONT COVER UNIT		
7	XA9-1386-000		7	SCREW,RS,M3X8		
8	FC6-2610-000		2	PIVOT		
9	HC1-1613-000		1	SHEET,HIGH TEMP,CAUTION		
10	HC1-1624-000		1	LABEL,HIGH TEMP,CAUTION		
11	HC1-1947-000		1	TRAY, AUXILIARY		
501	XB4-7400-807		11	SCREW,TAPPING,TRUSS HEAD,M4X8		

FIGURE 101
INTERNAL COMPONENTS 1

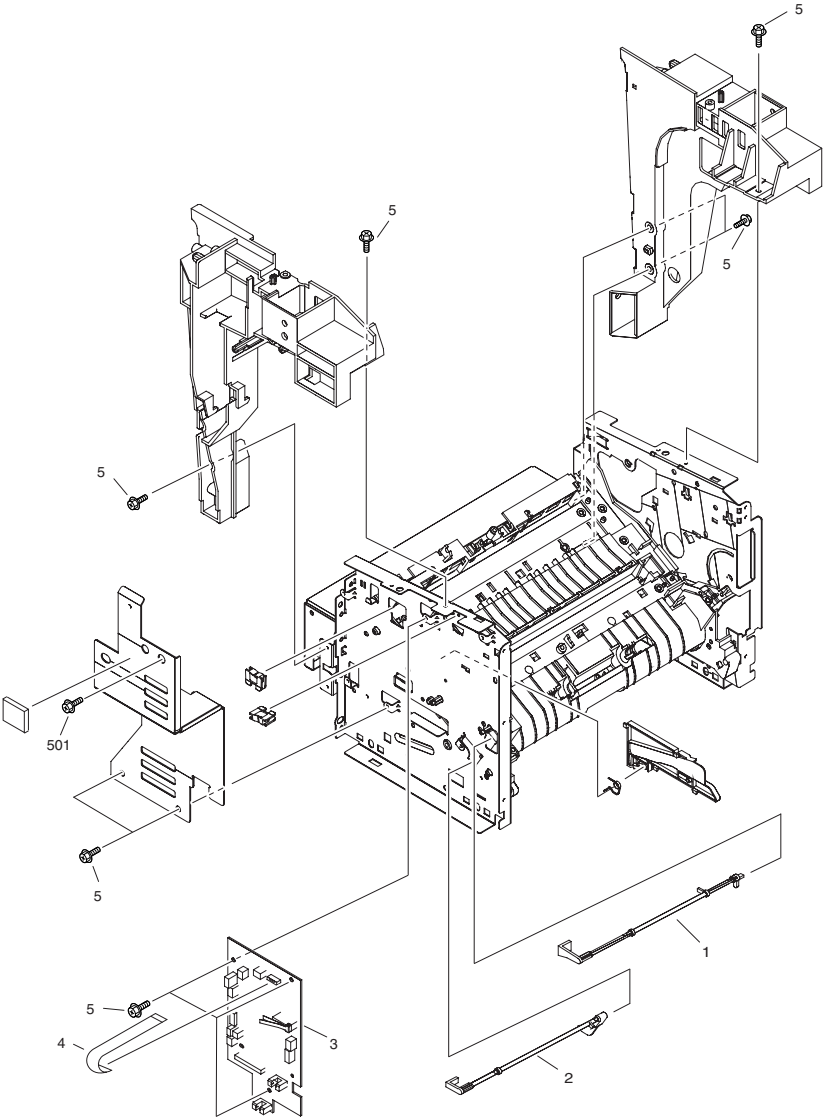


FIGURE & KEY NO.	PARTS NUMBER	RANK	Q'TY	DESCRIPTION	SERIAL NUMBER/REMARKS	SVC
Fig.101	NPN		RF	INTERNAL COMPONENT		
1	FC5-4808-000		1	FLAG, MANUAL FEED SENSOR		
2	FC5-4814-000		1	FLAG, CASSETTE SENSOR		
3	FM5-5318-000		1	ECNT BOARD ASS'Y	EZN&VZN&BZN&AZN&C ZN&RZN&TZN&DZN	
3	FM5-5317-000		1	ECNT BOARD ASS'Y	UZN&YZN&LZN	
4	FH2-7157-000		1	CABLE, FLAT		
5	XA9-1386-000		11	SCREW,RS,M3X8		
501	XB4-7400-807		1	SCREW,TAPPING,TRUSS HEAD,M4X8		

FIGURE 102
INTERNAL COMPONENTS 2

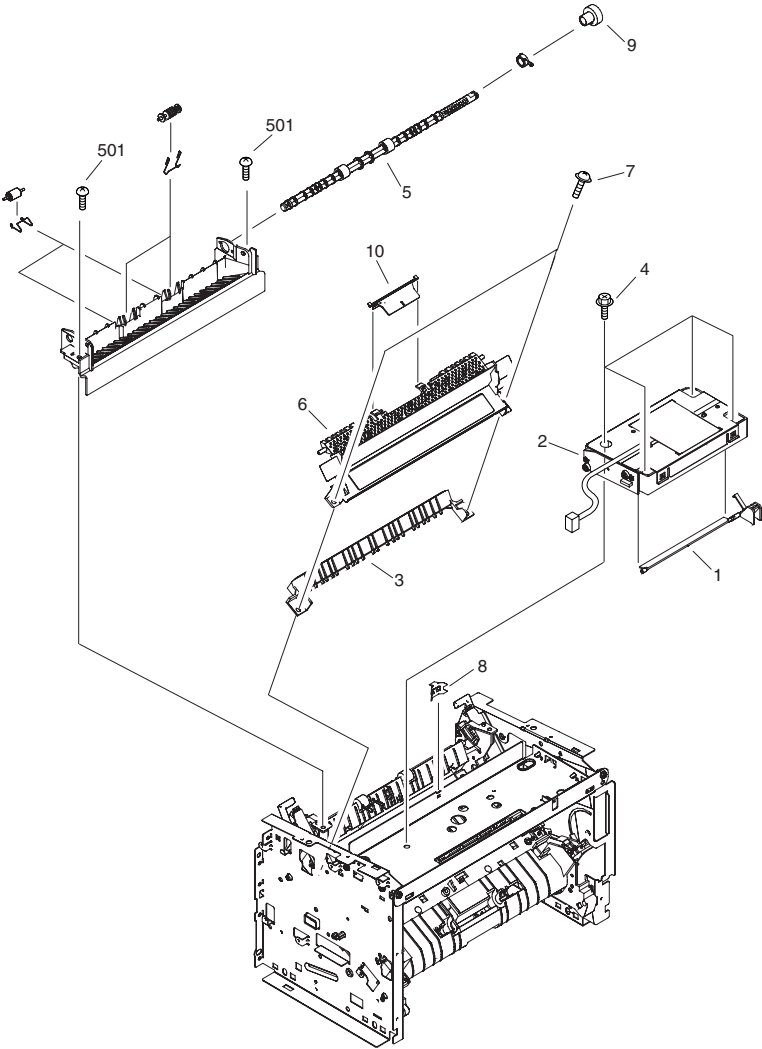


FIGURE & KEY NO.	PARTS NUMBER	RANK	Q'TY	DESCRIPTION	SERIAL NUMBER/REMARKS	SVC
Fig.102	NPN		RF	INTERNAL COMPONENTS 2		
1	FC5-4775-000		1	ARM, LASER SHUTTER		
2	FM2-1081-000		1	LASER/SCANNER UNIT		
3	FC5-4833-000		1	GUIDE, FIXING ENTRANCE		
4	XA9-1386-000		4	SCREW,RS,M3X8		
5	FL2-1043-000		1	ROLLER, FACE-DOWN DELIVERY		
6	FL2-1050-000		1	COVER, FIXING		
7	XA9-1502-000		2	SCREW,W/WASHER,M4		
8	FC5-4778-000		1	PLATE,GROUNDING		
9	FU5-0699-000		1	GEAR, 19T		
10	FC5-4850-000		1	FLAG, ROLL PREVENTION		
501	XB4-7400-807		2	SCREW,TAPPING,TRUSS HEAD,M4X8		

FIGURE 103
INTERNAL COMPONENTS 3

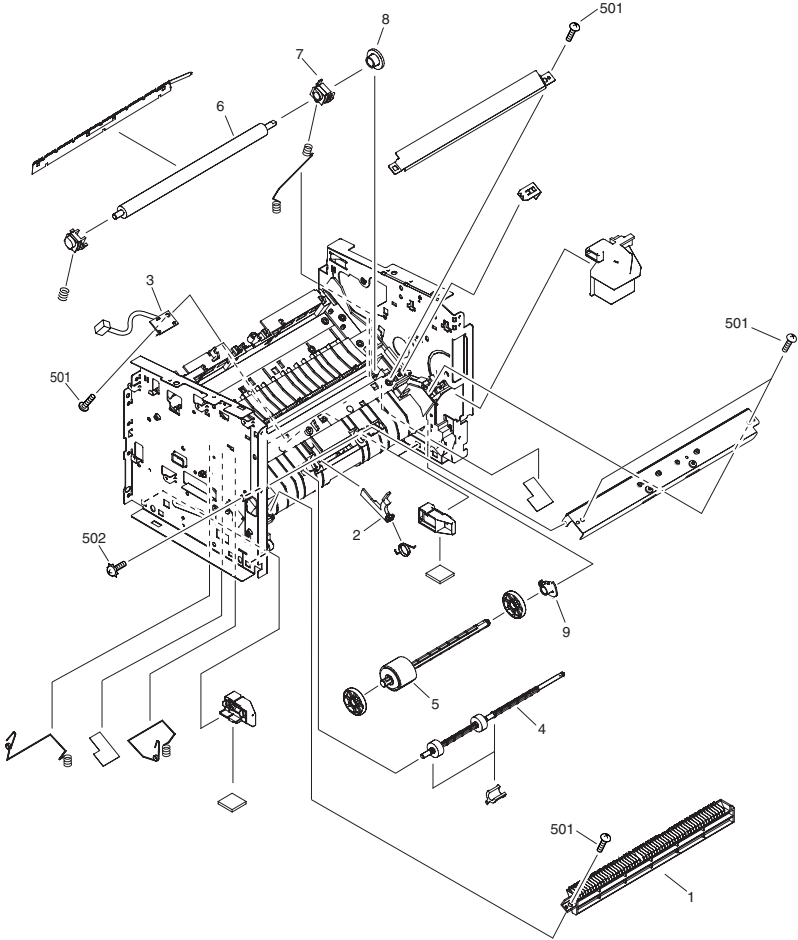


FIGURE & KEY NO.	PARTS NUMBER	RANK	Q'TY	DESCRIPTION	SERIAL NUMBER/REMARKS	SVC
Fig.103	NPN		RF	INTERNAL COMPONENTS 3		
1	FC5-4800-000		1	GUIDE,U-TURN		
2	FC5-4799-000		1	FLAG, REGIST. SENSOR		
3	FM5-5263-000		1	TOP SENSOR PCB UNIT		
4	FL2-1042-000		1	ROLLER, FEEDER		
5	FL2-1046-000		1	ROLLER, CASSETTE PICK-UP		
6	RC1-1776-000		1	ROLLER, TRANSFER		
7	FC5-4807-000		1	BUSHING,TRANSFER ROLLER,RIGHT		
8	FU5-0716-000		1	GEAR, 17T		
9	FC5-4921-000		1	BUSHING		
501	XB4-7400-807		5	SCREW,TAPPING,TRUSS HEAD,M4X8		
502	XB2-7300-607		1	SCREW, W/WASHER, M3X6		

FIGURE 104
INTERNAL COMPONENTS 4

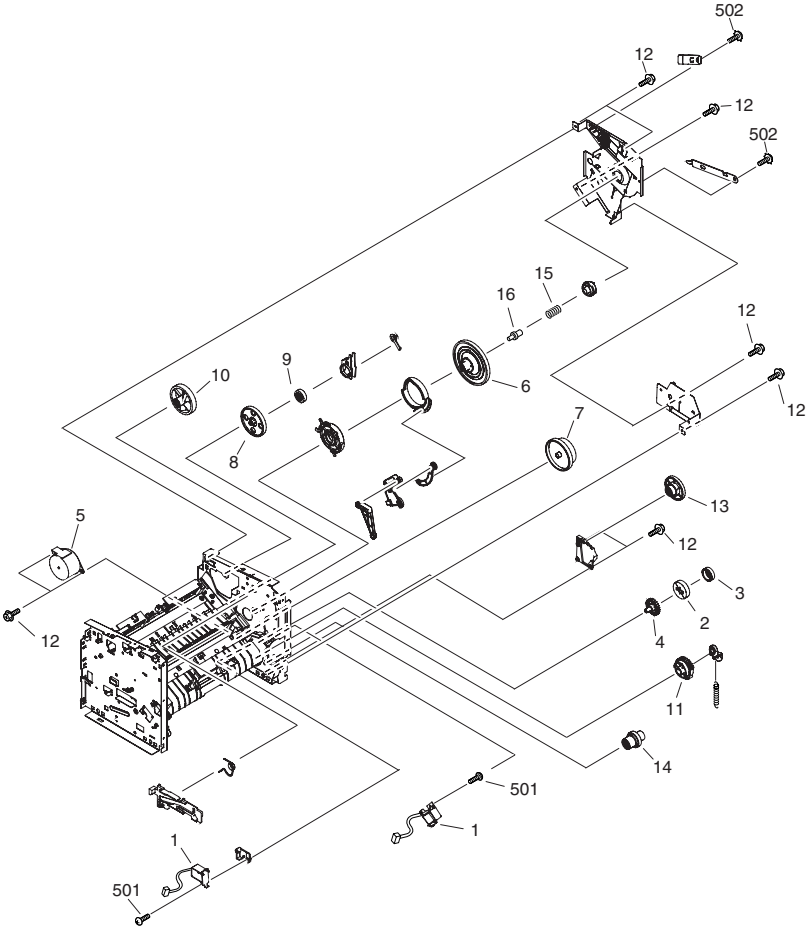


FIGURE & KEY NO.	PARTS NUMBER	RANK	Q'TY	DESCRIPTION	SERIAL NUMBER/REMARKS	SVC
1	FH6-5093-000		2	SOLENOID, PICK-UP		
2	FM2-1069-000		1	GEAR UNIT		
3	FU5-0707-000		1	GEAR,51T		
4	FU5-0709-000		1	GEAR,17T		
5	FH5-1081-000		1	MOTOR, MAIN, STEPPING		
6	FU5-0700-000		1	GEAR, 163T		
7	FU5-0701-000		1	GEAR,91T/115T		
8	FU5-0702-000		1	GEAR, 18T/107T		
9	FU5-0703-000		1	GEAR, 17T		
10	FU5-0704-000		1	GEAR, 55T		
11	FU5-0714-000		1	GEAR, 25T		
12	XA9-1386-000		9	SCREW,RS,M3X8		
13	FU5-0705-000		1	GEAR, 22T/86T		
14	FU5-0710-000		1	GEAR, 19T/35T		
15	FU5-2429-000		1	SPRING,DRUM CONTACT PIN		
16	FC5-4878-000		1	PIN,DRUM CONTACT		
501	XB4-7400-807		2	SCREW,TAPPING,TRUSS HEAD,M4X8		
502	XB2-7300-607		2	SCREW, W/WASHER, M3X6		
Fig.104	NPN		RF	INTERNAL COMPONENTS 4		

FIGURE 105
INTERNAL COMPONENTS 5

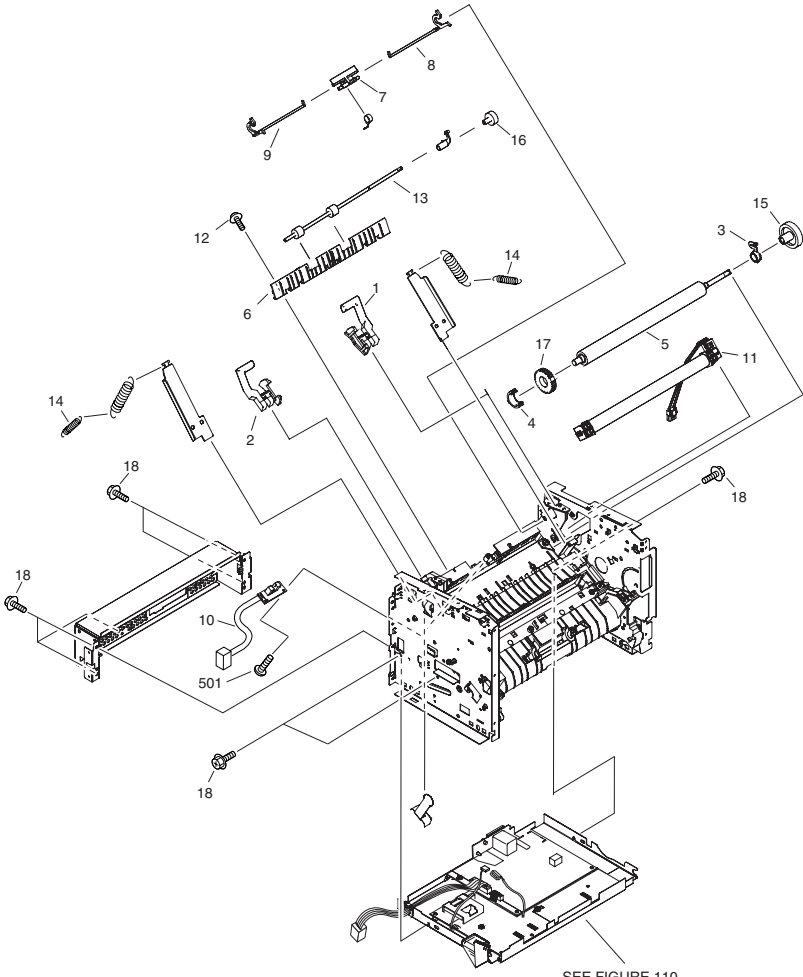


FIGURE & KEY NO.	PARTS NUMBER	RANK	QTY	DESCRIPTION	SERIAL NUMBER/REMARKS	SVC
Fig.105	NPN		RF	INTERNAL COMPONENTS 5		
1	FC5-4827-000		1	LEVER, PRESSURE RELEASE, RIGHT		
2	FC5-4828-000		1	LEVER, PRESSURE RELEASE, LEFT		
3	FC5-4829-000		1	USHING,ROLLER PRESSURE,RIGHT		
4	FC5-4830-000		1	BUSHING,ROLLER PRESSURE,LEFT		
5	FC5-4871-000		1	ROLLER,PRESSURE		
6	FC5-4832-000		1	GUIDE,DELIVERY		
7	FC5-4834-000		1	FLAG, DELIVERY SENSOR		
8	FC5-4861-000		1	LEVER,PRESS RELEASE SENS,RIGHT		
9	FC5-4862-000		1	LEVER,PRESS RELEASE SENS,LEFT		
10	FM5-5264-000		1	DELIVERY SENSOR PCB UNIT		
11	FM2-1099-000		1	FILM UNIT	EZN&VZN&BZN&AZN&C ZN&RZN&TZN&DZN	
11	FM2-1098-000		1	FILM UNIT	UZN&YZN&LZN	
12	XA9-1502-000		1	SCREW,W/WASHER,M4		
13	FL2-1044-000		1	ROLLER,FACE-UP		
14	FU5-2425-000		2	SPRING,PRESSURE GROUNDING		
15	FU5-0713-000		1	GEAR, 29T		
16	FU5-0698-000		1	GEAR,ROLL,FACE-UP		
17	FC5-4860-000		1	RUBBER RING,CONDUCTIVE		
18	XA9-1386-000		8	SCREW,RS,M3X8		
501	XB4-7400-807		1	SCREW,TAPPING,TRUSS HEAD,M4X8		

FIGURE 110
POWER SUPPLY ASS'Y

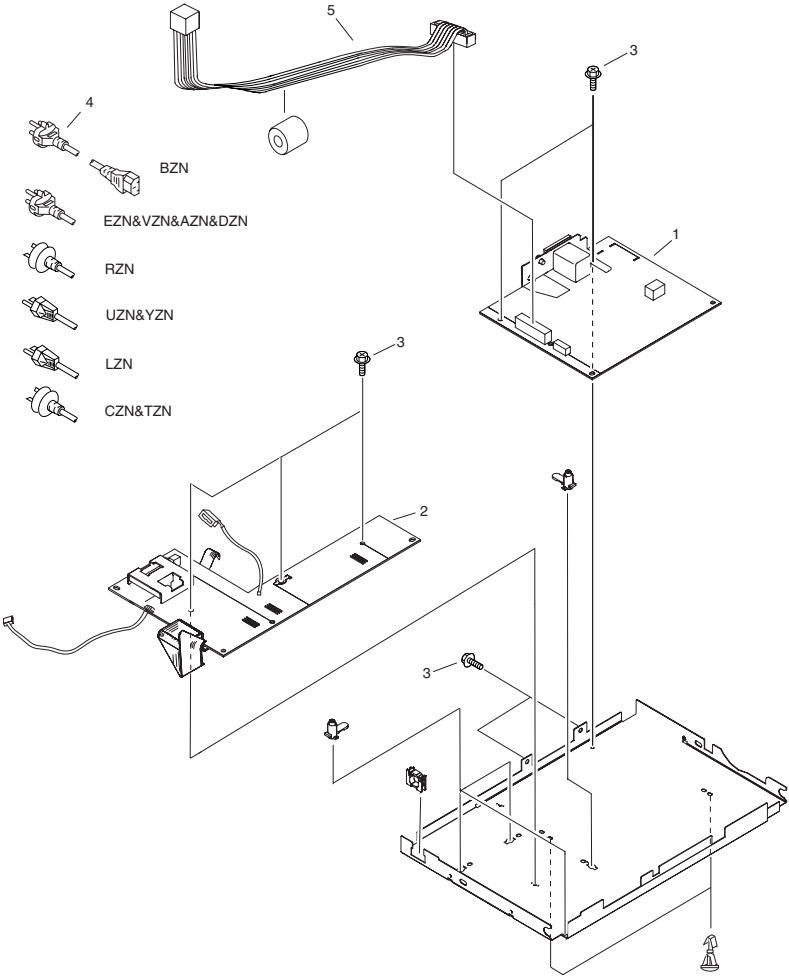
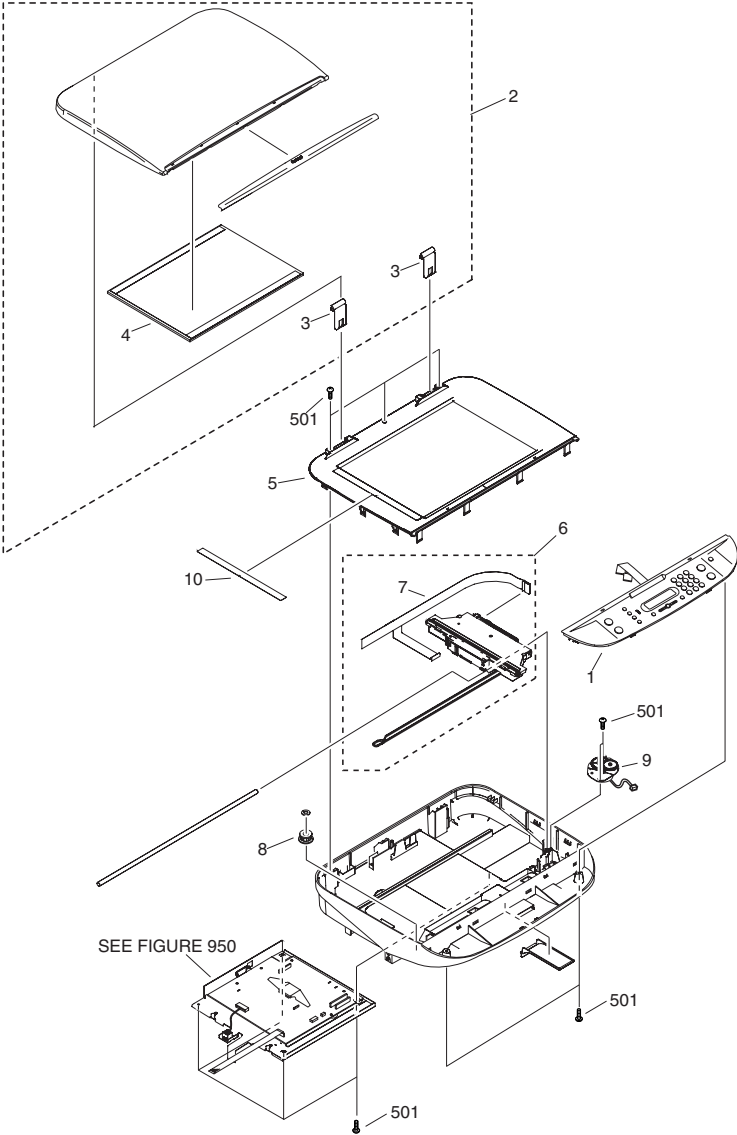


FIGURE & KEY NO.	PARTS NUMBER	RANK	Q'TY	DESCRIPTION	SERIAL NUMBER/REMARKS	SVC
Fig.110	NPN		RF	POWER SUPPLY ASS'Y		
1	FH3-2688-000		1	POWER SUPPLY UNIT	EZN&VZN&BZN&AZN&CZN&RZN&TZN&DZN	
1	FH3-2689-000		1	POWER SUPPLY UNIT	UZN&YZN&LZN	
2	FM5-5262-000		1	HIGH-VOLTAGE PCB UNIT		
3	XA9-1386-000		7	SCREW,RS,M3X8		
4	FM5-5293-000		1	CORD, POWER	BZN	
4	FM5-5294-000		1	CORD, POWER	CZN&TZN	
4	FM5-5292-000		1	CORD, POWER	EZN&VZN&AZN&DZN	
4	HG1-5295-000		1	CORD, POWER	LZN	
4	FM5-5296-000		1	CORD, POWER	RZN	
4	FM5-5273-000		1	CORD, POWER	UZN&YZN	
5	HG1-4520-000		1	CABLE WITH CONNECTOR, 9P		

FIGURE 210 SCANNER ASS'Y



NOTE: This assembly does not include the parts shown with Key No. 1,2.

FIGURE & KEY NO.	PARTS NUMBER	RANK	QTY	DESCRIPTION	SERIAL NUMBER/REMARKS	SVC
Fig.210	FY6-0383-000		1	SCANNER ASS'Y		
1	FM2-2893-000		1	OPERATION PANEL UNIT	CZN&TZN SEE NOTE	
1	FM2-2887-000		1	OPERATION PANEL UNIT	EZN&VZN&BZN&AZN&RZN&DZN SEE NOTE	
1	FM2-2885-000		1	OPERATION PANEL UNIT	UZN&YZN0&LZN SEE NOTE	
2	FM2-2894-000		1	DOCUMENT COVER ASS'Y	TZN&DZN SEE NOTE	
2	FM2-2884-000		1	DOCUMENT COVER ASS'Y	UZN&YZN&RZN&LZN&EZ ZN&VZN&BZN&AZN&CZ N SEE NOTE	
3	FC6-2607-000		2	HINGE		
4	FC6-2608-000		1	SHEET, DOCUMENT PRESSUR		
5	FY6-0384-000		1	SCANNER COVER ASS'Y		
6	FY6-0385-000		1	CCD UNIT		
7	FY3-0293-000		1	CABLE, FLAT, 22P		
8	FY5-0188-000		1	BELT WHEEL UNIT		
9	FY6-0386-000		1	FLAT BED MOTOR UNIT		
10	FC6-2609-000		1	SHEET, INDEX		
501	XB4-7300-807		10	SCREW, TAP TIGHT. BINDING HEAD		

FIGURE 300 CASSETTE

EZN/VZN/BZN/AZN/RZN/CZN/TZN/DZN(A4/LTR)
/LZN(LGL)

UZN/YZN

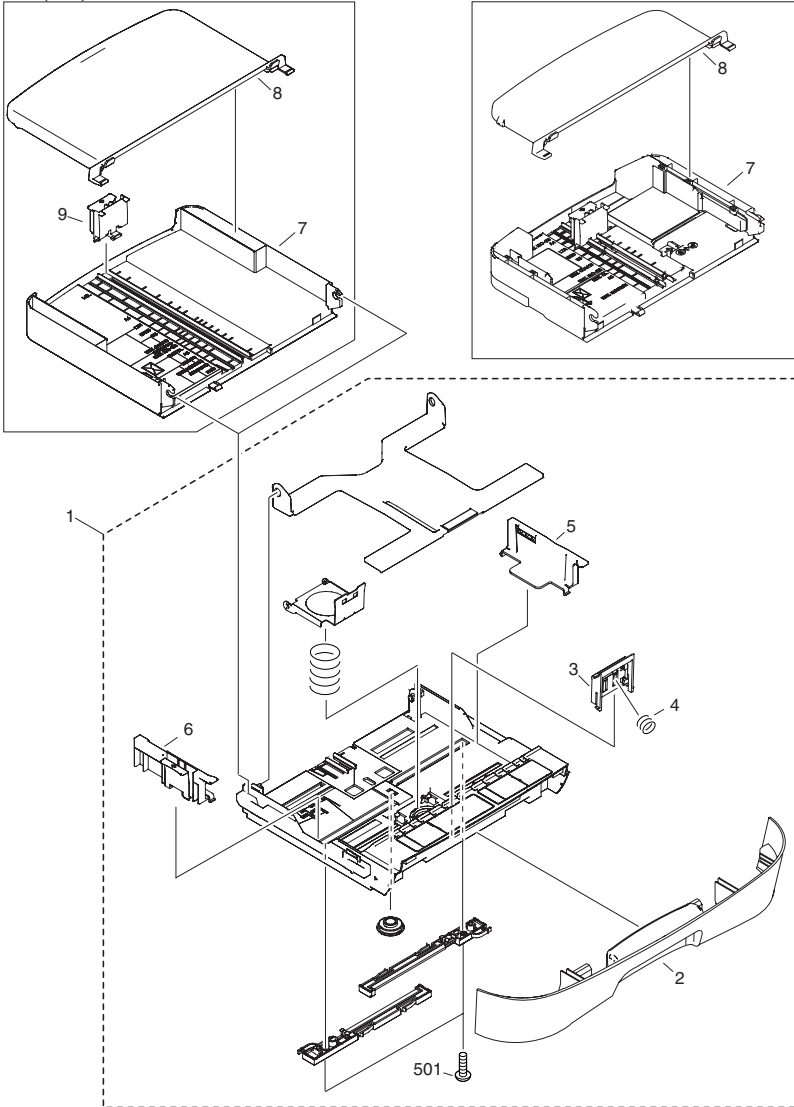


FIGURE & KEY NO.	PARTS NUMBER	RANK	QTY	DESCRIPTION	SERIAL NUMBER/REMARKS	SVC
Fig.300	NPN		RF	CASSETTE		
1	FM2-2883-000		1	CASSETTE UNIT		
2	FC6-2616-000		1	COVER, CASSETTE FRONT		
3	FL2-1047-000		1	PAD, SEPARATION		
4	FU5-2434-000		1	SPRING,PAD		
5	FC5-4911-000		1	PLATE,SIDE LIMIT,RIGHT		
6	FC5-4913-000		1	PLATE, SIDE LIMIT, LEFT		
7	FC5-4928-000		1	CASSETTE EXTENSION UNIT	EZN&VZN&BZN&AZN&C ZN&RZN&TZN&DZN&CZ N	
7	FC5-4933-000		1	CASSETTE EXTENSION UNIT	LZN	
7	FM2-2888-000		1	CASSETTE EXTENSION UNIT	UZN&YZN	
8	HC1-2008-000		1	COVER, CASSETTE UPPER	EZN&VZN&BZN&AZN&C ZN&RZN&TZN&DZN&CZ N	
8	HC1-2009-000		1	COVER, CASSETTE UPPER	LZN	
8	FC6-2645-000		1	COVER, CASSETTE UPPER	UZN&YZN	
9	FC5-4908-000		1	PLATE, BACK END LIMIT		
501	XB4-7300-807		2	SCREW, TAP TIGHT, BINDING HEAD		

FIGURE 950 SCNT BOARD ASSEMBLY

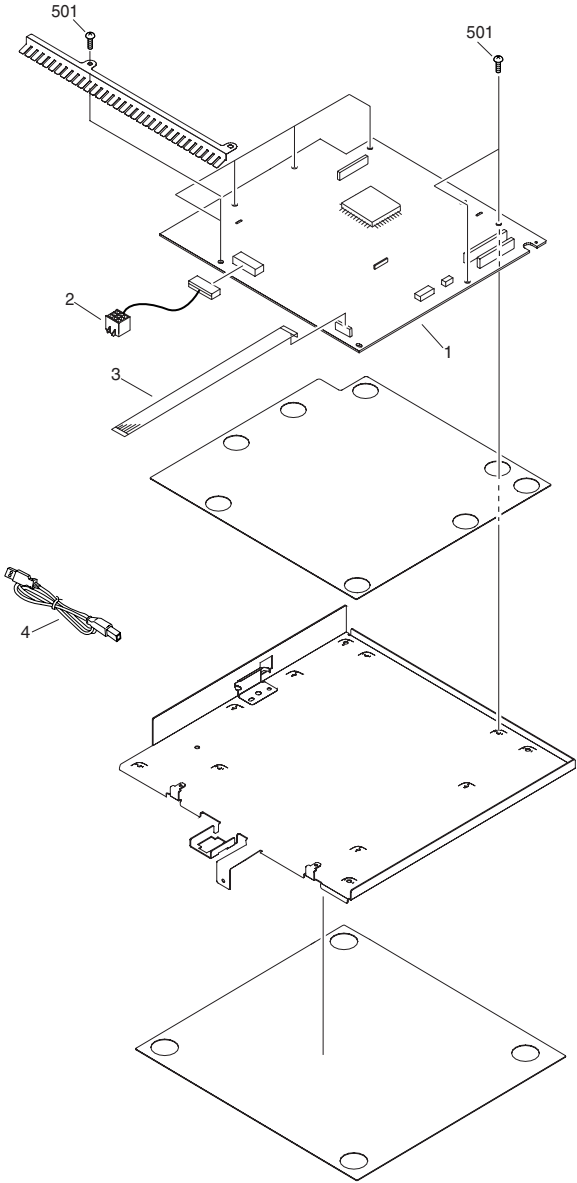


FIGURE & KEY NO.	PARTS NUMBER	RANK	QTY	DESCRIPTION	SERIAL NUMBER/REMARKS	SVC
Fig.950	NPN		RF	BOARD ASS'Y		
1	FG3-3831-000		1	SCNT BOARD ASS'Y	CZN&TZN	
1	FG3-3830-000		1	SCNT BOARD ASS'Y	UZN&YZN&LZN&EZN&VZ N&BZN&AZN&RZN&DZN	
2	FG3-3835-000		1	CABLE, ASS'Y		
3	FH2-7189-000		1	CABLE, FLAT		
4	HH2-3274-000		1	CABLE, USB		
501	XB1-2300-607		7	SCREW, BH3X6(S)		

Prepared by
OFFICE IMAGING PRODUCTS QUALITY ASSURANCE CENTER
CANON INC.

Canon